

FIGURE 12. 2 The ear, showing its three subdivisions—outer, middle, and inner.

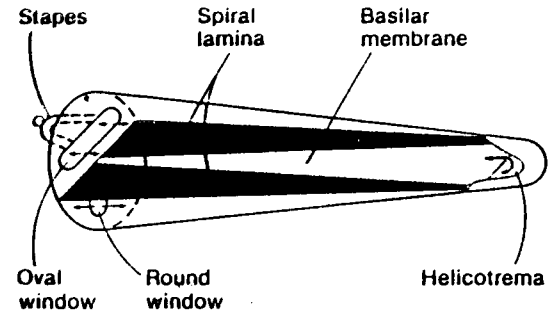
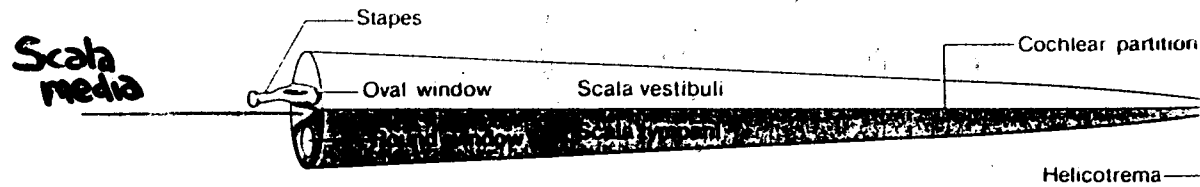


FIGURE 12. 16 A perspective view of an uncoiled cochlea, showing how the basilar membrane gets wider at the helicotrema end of the cochlea. The spiral lamina is a supporting structure which makes up for the basilar membrane's difference in width at the stapes and helicotrema ends of the cochlea. (From Schubert, 1980.)



(b) Fully uncoiled cochlea

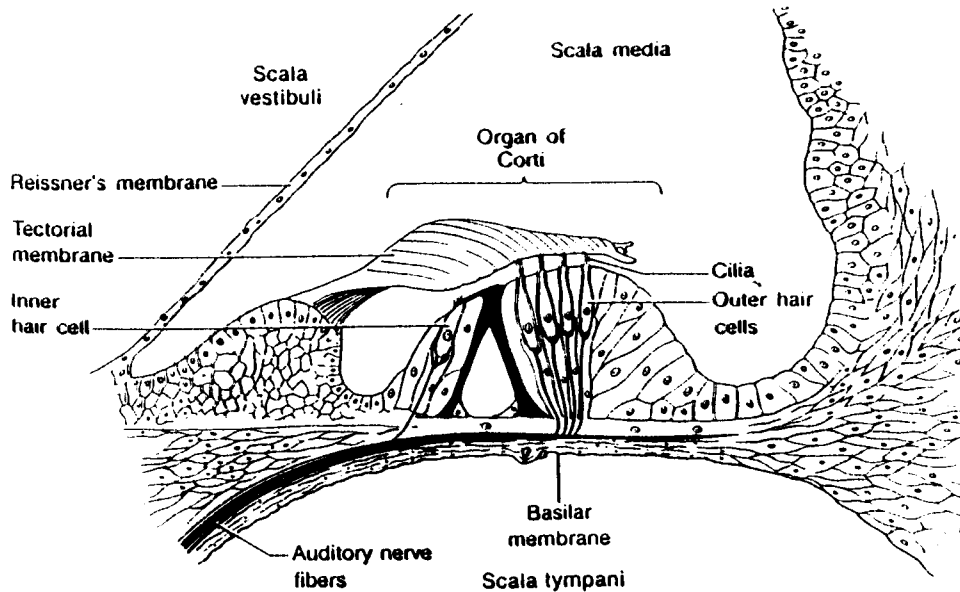


FIGURE 12. 10 The organ of Corti. (Adapted from Gulick, 1971.)

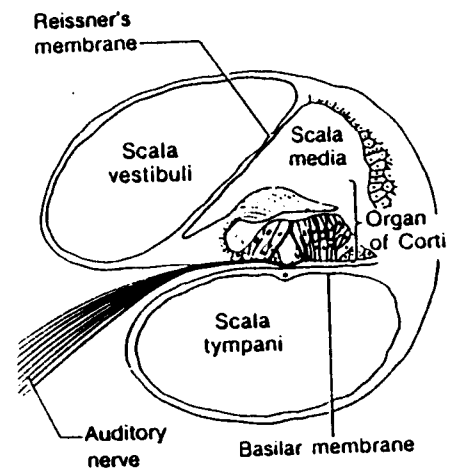


FIGURE 12. 9 A cross section of the cochlea.